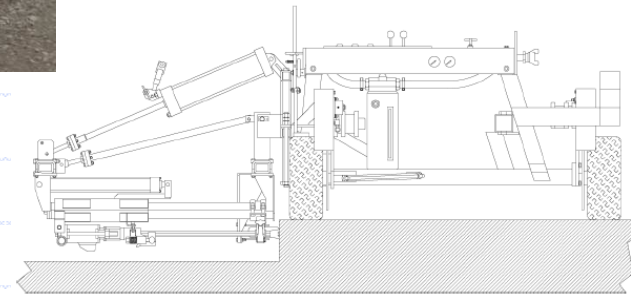


m **Minnich**

CONCRETE VIBRATORS & DOWEL PIN DRILLS

Dowel Pin & Special Application Drill Units

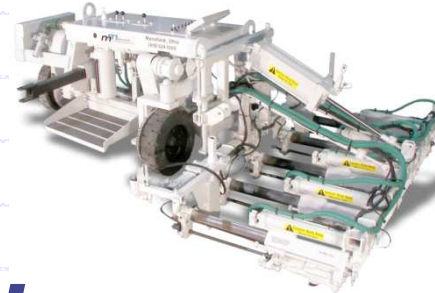


International Department:

COMACE IMPORT, S
Pol. Ind. Els Dolors, C/ Castellet, nº 15
08243 MANRESA (Barcelona)
Tel. 699 46 48 55 - Tel. 93 878 43 18
E-mail: comace@comaceimport.com
Web: www.comaceimport.com

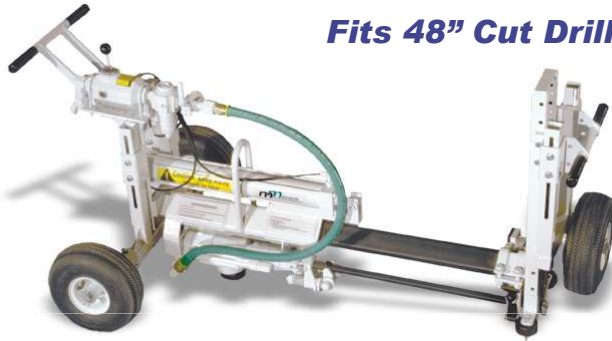
Drill Unit Options

- ***On-grade Push Units***
- ***On-slab Push Units***
- ***Self Propelled***
- ***Machine Mounted
(Pneumatic or Hydraulic)***



A-1 On-Grade Push Unit

**A-1-48 Standard Configuration:
Fits 48" Cut Drills 18" Deep**



**A-1-36 Corner Configuration:
Fits 36" Cut Drills 10" Deep
3" from Corner**



**A-1-30 Wall Configuration:
Fits 30" Cut Drills 10" Deep**



**A-1-30 Vertical Configuration:
Fits 24" Cut Drills 7" Deep**



A-1CL On-Slab Push Unit

Light weight model available in 4 Sizes:

- **A-1CL-48**
- **A-1CL-36**
- **A-1CL-30**
- **A-1CL-24**



3 or 4 Position Drilling:

- **Horizontal**
- **Vertical**
- **35 Degree Stitch**
- **Skew Drilling**



A-1C / A-2C On-slab Push Units



- ❖ **Steerable Push Unit**
- ❖ **Adjustable Height & Depth**
- ❖ **Fits in 48" Cut**
- ❖ **Standard 18" Drill Depth**
- ❖ **Urethane Filled Tires**
- ❖ **3 Position Drilling:**
 - **Horizontal**
 - **Vertical**
 - **35 deg Stitch**



Self Propelled On-slab Units

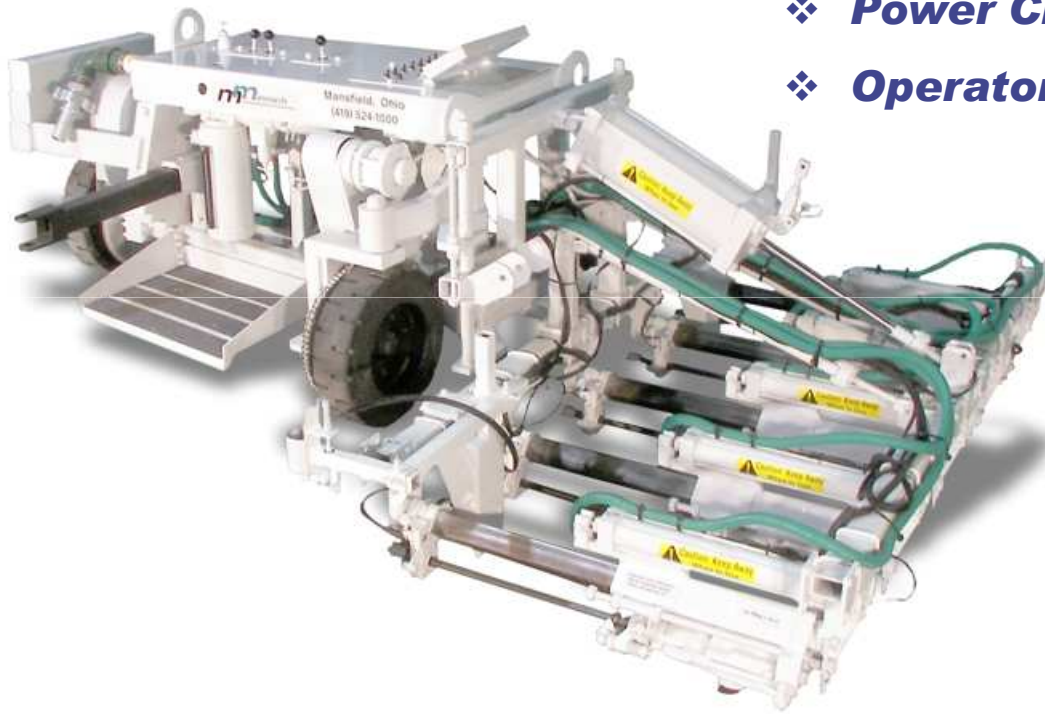


- ❖ **Self Propelled**
- ❖ **2 & 3 Drill Options**
- ❖ **Crab Steering**
- ❖ **Adjustable Height, Depth & Centers**
- ❖ **Fits in 48" Cut**
- ❖ **Standard 18" Drill Depth**
- ❖ **Urethane Filled Tires**
- ❖ **Tow Hitch to Pull Compressor**
- ❖ **2 Position Drilling:**
 - **Horizontal**
 - **Vertical**

A-2SC / A-3SC

Self Propelled On-slab Units

- ❖ ***High Production 4 & 5 Drill Units***
- ❖ ***Power Crab Steering***
- ❖ ***Operator Work Platform***



A-4SC / A-5SC

Machine Mounted Air Drills



- ❖ ***Backhoe or Skid Loader Mounted***
- ❖ ***Adjustable Height, Depth & Hole Centers***
- ❖ ***High Production 2 thru 6 Drill Units***
- ❖ ***Side Shift Standard on A-2 & A-3***
(Optional on A-4 thru A-6)
- ❖ ***Fits in a 48" Cut Drills 18" Deep***
- ❖ ***330° Bed Rotation***



Hydraulic Machine Mounted Units



- ❖ ***Backhoe or Skid Loader Mounted***
- ❖ ***Draws Hydraulic Power from Host Machine***
- ❖ ***Adjustable Height, Depth & Hole Centers***
- ❖ ***High Production 2 thru 6 Drill Units***
- ❖ ***Side Shift Feature Available***
- ❖ ***Oil Cooler Included***
- ❖ ***Fits in a 48" Cut Drills 18" Deep***



Testimonials



A-1-48

*"I really like the versatility."
Chuck Daley Kokosing Const.*



A-55C

*"Gadgets that keep you from drilling holes are no good, but gadgets that help drill holes are great."
Said Dean Kayser with Fred Weber*



A-2C

Testimonials



***"We are drilling holes 2 to 1
over the competition."
Dave Wrights Gohmann Asphalt***



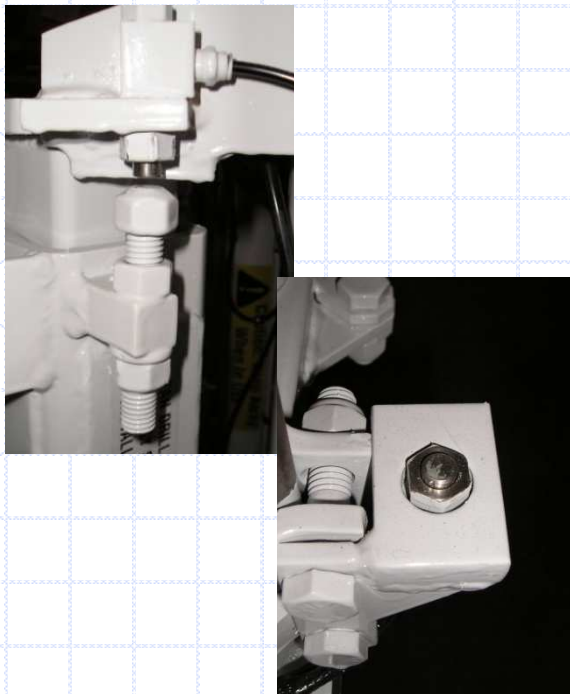
***"The skid steer set up is the best
option out there. It is a good drill and
I can out drill anybody hand drilling."
Bill Thompson Terrace Construction***



Optional Features

❖ **Dust Collection System**

- **Effective Dust Suppression & Control**
- **Retrofittable to Any Existing Drill Unit**



❖ **Auto Controls**

- **Increase Life of Drills**
- **Easy to Use**
- **Manual Override**

Optional Features

❖ **Skew Kit**

- **Standard on A-1CL & A1C**
- **Available on A-2SC & A-4SC**

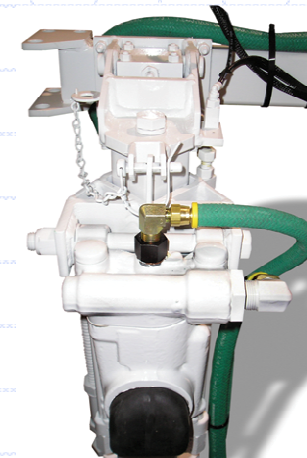


❖ **On-Grade Kit**

- **Available for all on-slab units**

❖ **Water Kit**

- **Flushes Hole with Water**
- **Effectively Suppresses Dust**
- **Retrofit to Any Existing Drill Unit**



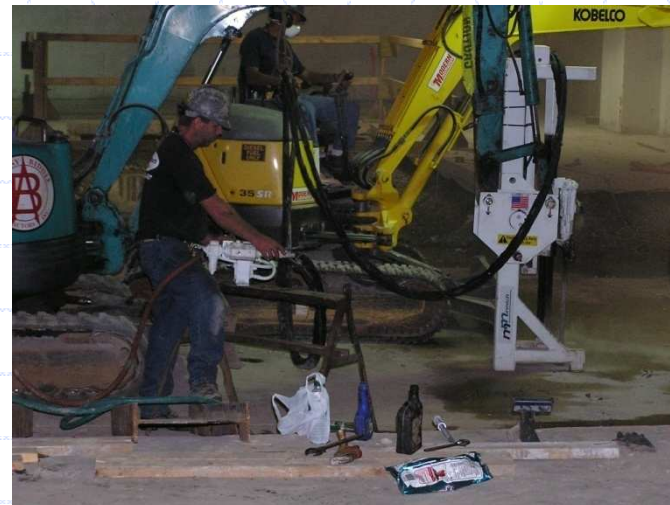
Special Application Drills



4 Gang Quarry Drill – 10' Deep Holes

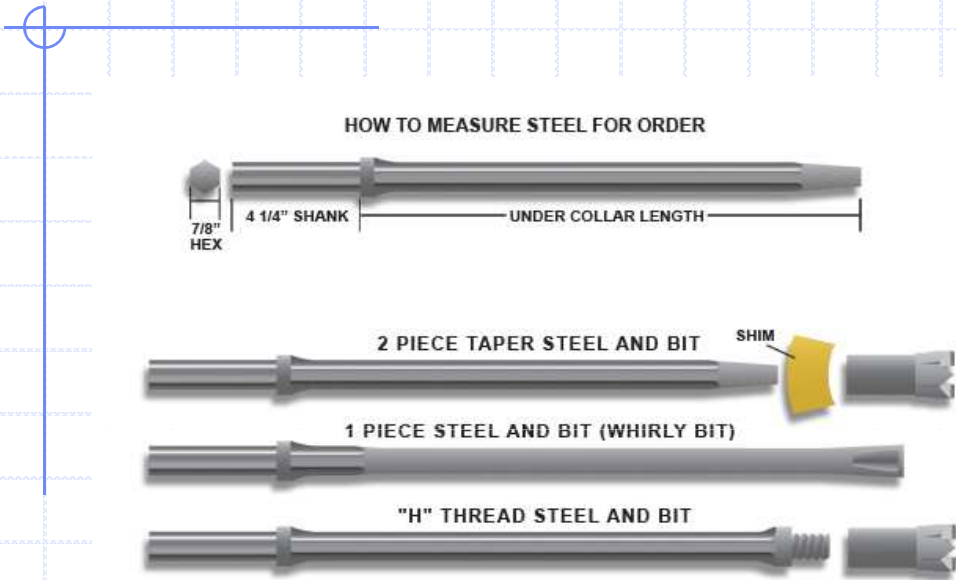


4 Gang Core Drill



Mini Excavator Mounted Drill

Drill Steels & Bits



Type

Whirlibit
Whirlibit
Whirlibit
Whirlibit

Bit - Hole Diameter		Length	
in	mm	in	cm
5/8	15.88	20	50.8
3/4	19.05	24	60.96
7/8	22.23	24	60.96
1	25.40	24	60.96

Drill Steel - Taper

Bit, Taper
Bit, Taper
Bit, Taper
Bit, Taper
Bit, Taper
Bit, Taper

--	--	24	60.96
1 1/8	28.58		
1 1/4	31.75		
1 3/8	34.93		
1 1/2	38.10	--	--
1 3/4	44.45	--	--
2	50.80	--	--

Drill Steel - H Thread

Bit, H Thread
Bit, H Thread
Bit, H Thread
Bit, H Thread

--	--	24	60.96
1 3/8	34.93	--	--
1 1/2	38.10	--	--
1 3/4	44.45	--	--
2	50.80	--	--

Bit, H Thread
Bit, H Thread
Bit, H Thread
Bit, H Thread

2 1/4	57.15
2 1/2	63.50
2 5/8	66.68
3	76.20

Note: For Taper and H-Thread drills steel & bits are sold separately